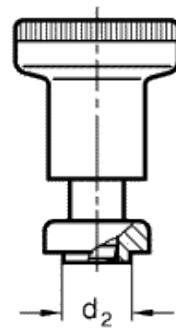
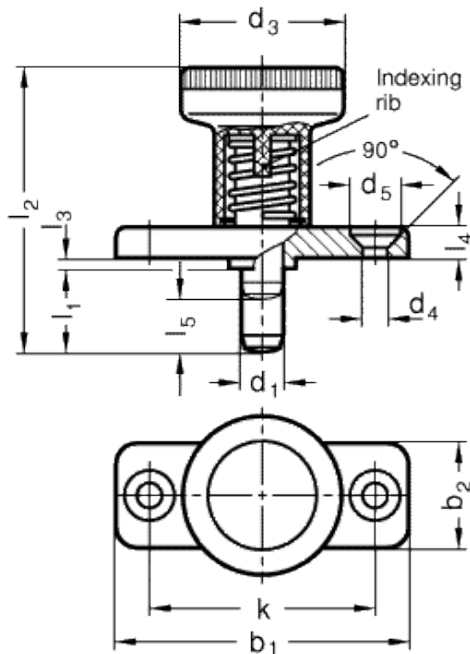


# GN 608.6

Indexing plungers with flange and rest position



INOX  
Stainless Steel



with plunger in rest position  
(if  $l_1 = d_1$ )



## technical informations

### Body with flange

Zinc-plated die-cast zinc-alloy with two holes for assembly with countersunk head screws.

### Plunger

AISI 303 stainless steel, chemically nickel plated.  
Suggested matching hole in H7 tolerance.

"Push/Pull" knurled knob

High resilience polyamide based (PA) technopolymer, black colour, matte finish. Resistant to solvents, oils, greases and other chemical agents.

### Applications

GN 608.6 indexing plungers with flange and rest position have compact dimensions and are used on thin metal sheets and where the plunger needs to be locked in the retracted position.

Standard Elements	Main dimensions											Spring pressure in N ≈		Axial holding force in N	Weight g		
	d <sub>1</sub> -0.02/-0.04	l <sub>1</sub>	b <sub>1</sub>	b <sub>2</sub>	d <sub>2</sub> -0.02/-0.1	d <sub>3</sub>	d <sub>4</sub>	d <sub>5</sub>	k	l <sub>2</sub>	l <sub>3</sub> -0.15	l <sub>4</sub>	l <sub>5</sub>			Preload	Max. load
GN 608.6-6-6	6	6	40	18	10	25	4.3	8.3	30	37	2.5	4.5	6	8.5	22	400	23
GN 608.6-6-14	6	14	40	18	10	25	4.3	8.3	30	45	2.5	4.5	6	8.5	22	400	39
GN 608.6-8-8	8	8	46	20	12	31	5.3	10.4	34	44	2.5	5.5	8	15.5	28	500	58
GN 608.6-8-18	8	18	46	20	12	31	5.3	10.4	34	54	2.5	5.5	8	15.5	28	500	63



STANDARD MACHINE ELEMENTS WORLDWIDE